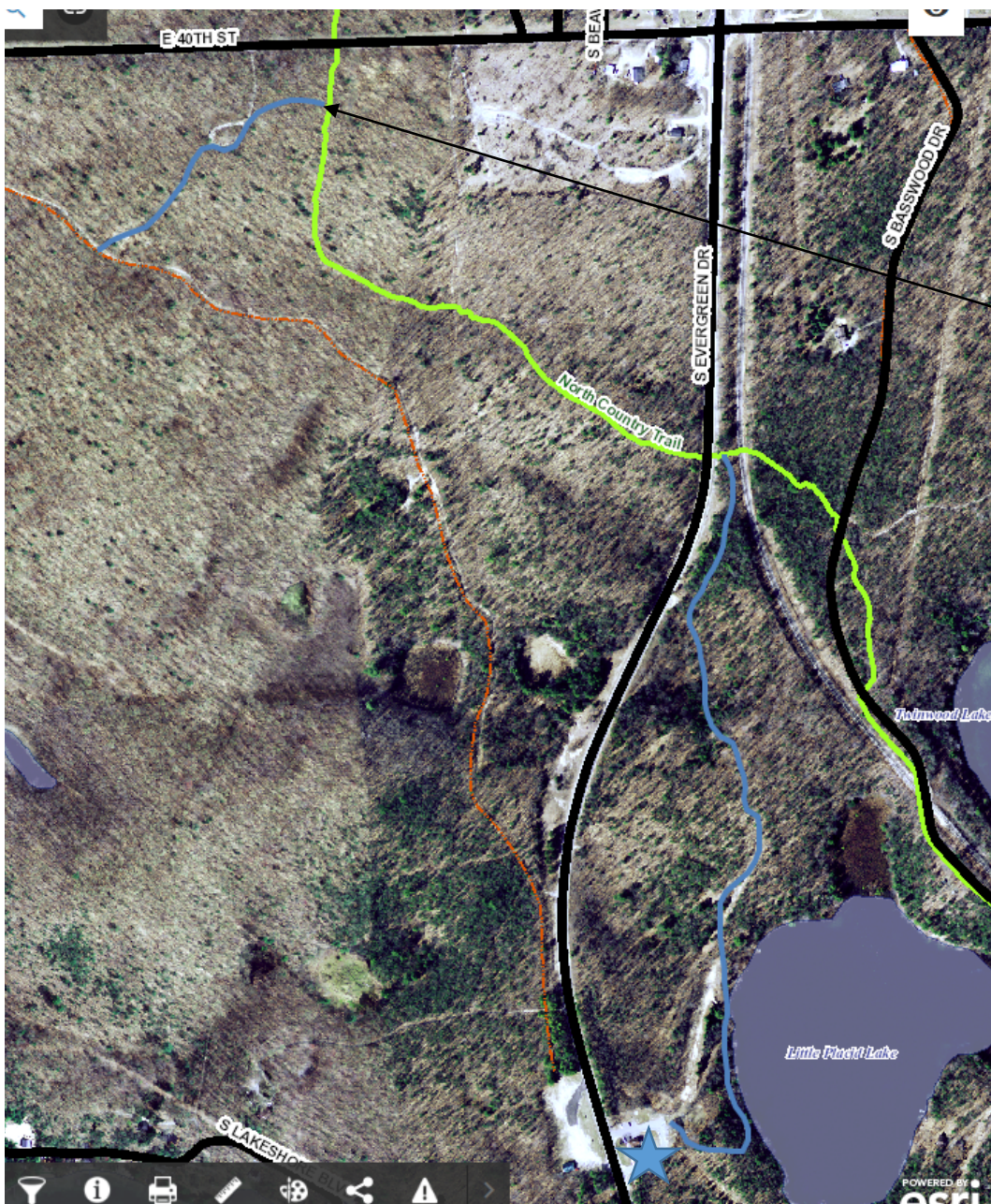


Newaygo County Welcome Center Hiking Loop

Utilizing the North Country Trail & Connectors and the Diamond 3 Snowmobile Trail

1. Start at the Welcome Center (blue star on map). Behind Graves Lodge follow signs to North Country Trail (NCT) connector (White squares on trees denote connector path and blue line on map.)
2. Follow to the North Country Trail (green line on map) where tree markings will change to blue squares.
3. Cross M-37 making sure to check for traffic.
4. Follow the NCT markings until reaching a Parking arrow (see photo below right). Follow that trail to the 40th Street NCT trailhead parking area. Go to the back of the looped parking area and follow the path by the bench.
5. Follow that until you reach the snowmobile trail (orange on map). The trail is hard to see until you are right on top of it, because it runs along a small embankment. Take the path to the left and stay to the left as it merges into another path further along. You will exit the snowmobile trail across the street from the Welcome Center.



**Trail is approximately
2 miles and takes
about 45 minutes to
an hour.**

**Newaygo County
Welcome Center**
4684 Evergreen Dr.
Newaygo, MI 49337
231-689-7340

www.newaygocountyexploring.com